

How to Access the NCCTO in the BB&T Building (MONDAY THROUGH FRIDAY)

200 South College Street, Suite 2020 (20th Floor)
Charlotte, North Carolina 28202
1.800.969.3926, Extension 2

Location Within Uptown Charlotte

The **BB&T Building** is near the center of uptown Charlotte at **200 South College Street**, between 3rd and 4th Streets. As shown below (*left*), the **BB&T Building** has two sections, a high-rise **office tower** segment and a rounded **parking garage**. The address is shown on the building (*below, right*), near the South College Street parking entrance.



Location Within BB&T Building

For Candidates Who Walk in through the Front Doors:



To enter the BB&T Building from the front of the building at **street level**, you will find the entrance doors in the middle of the **South College Street** block on which the building sits. Two pairs of front doors can be found roughly in the middle of the building at street level; these front doors are located between the concrete beams (red circle).



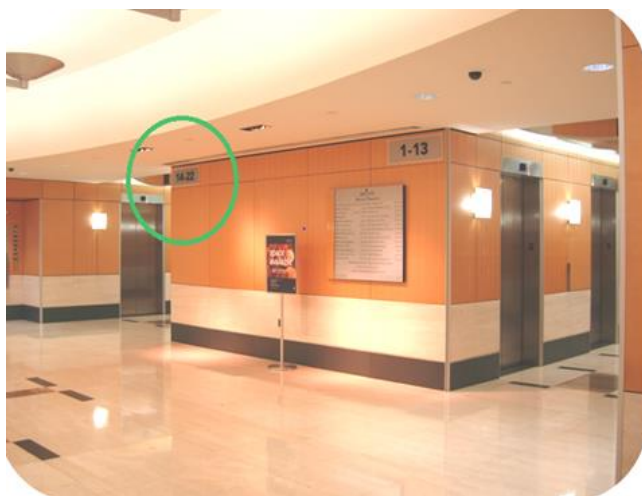
Once you enter the building at **street level**, you will see the two first-floor banks of **high-rise elevators** in the small BB&T lobby (*left*). Choose elevators marked 14-22 and take it to the **20th Floor** to reach the **NCCTO** within the BB&T Building.

For Candidates Who Walk to the NCCTO through the Overstreet Mall:

When the BB&T Building is entered on the **Overstreet Mall level**, you will have accessed the building on the **third floor**. BB&T's third-floor high-rise elevators are between **Merle Norman** and **McDonald's** and across from three **carved-stone murals** (below *left*).

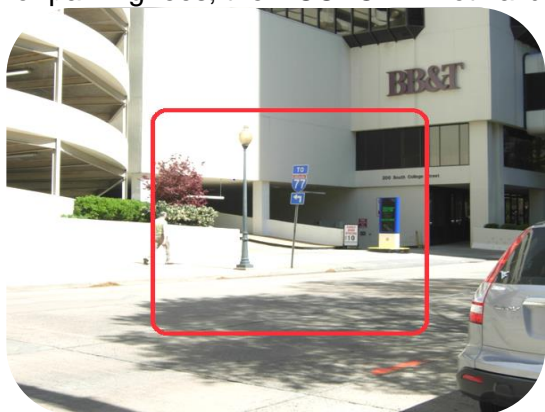


The elevators (6 elevators) designated **14-22** (right, in **green circle**) will take candidates to the **NCCTO** on the **20th Floor**.



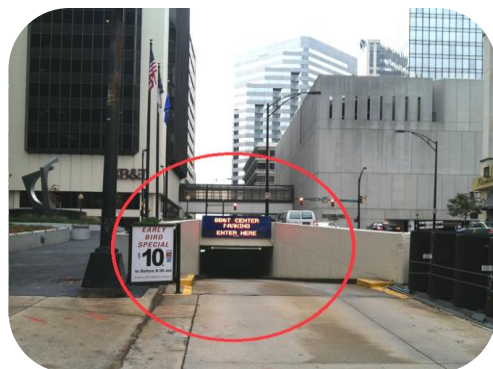
For Candidates Who Park in in the BB&T Parking Garage:

“Early bird” parking is available at a reduced rate (when entering the parking garage **before 8:30 a.m.**). The maximum, regular parking fee is \$20 per day (fees subject to change). Candidates are responsible for parking fees; the NCCTO will not validate parking.



One entrance to the **BB&T parking garage** (left, in **red box**) is on the one-way **South College Street**.

A **second** entrance to the **BB&T parking garage** is accessed from **East 4th Street**, a one-way street that borders the BB&T Building. This garage entrance involves veering off to the left, into the **garage tunnel** (pictured right, in **red oval**).



A **third** garage entrance is also accessed from **East 4th Street**, just after crossing South College Street, and again requires a **left** turn into the garage opening (pictured left, in **red oval**).

If you park on **Floor 2** or **Floors 4-11**, you will enter the BB&T Building through a different-colored parking garage deck elevator bank. Take one of the parking garage elevators to Floor 1 or Floor 3 and find the nearby high-rise elevator to the NCCTO on Floor 20. (**Saturday candidates MUST go to Floor 1 ONLY.**)



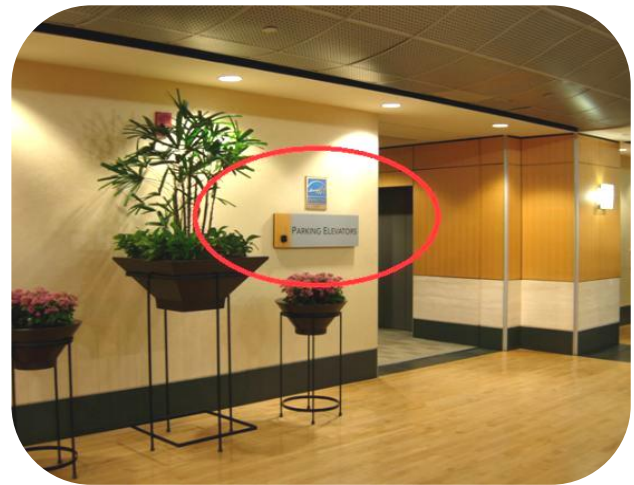
Candidates who park on Floor 3 of the BB&T parking garage will enter the building through 1 of the 2 third-floor parking deck's "rainbow doors." Enter the doors (*below left*); turn right; pass **Merle Norman**; and immediately turn left at the **high-rise elevators**. **OR**, enter the doors (*below, middle*); turn left; pass **McDonald's** on your right (**ignore the parking elevators on the left**); and turn right at the **high-rise elevators**. Use the elevator bank marked **Floors 14 – 22** (*below right*); the NCCTO is on the **20th floor**.



Please note that to return to your car if you parked on another floor other than 1 or 3, you will need to access the PARKING GARAGE elevator banks located on either the 1st or 3rd floors.

The parking garage elevators service the parking garage **ONLY**. These elevators do **NOT** take passengers to the NCCTO.

- The **Floor 1 parking garage elevator bank** (*below, left*) is adjacent to the **Security Station** a short distance from the front **BB&T Building lobby** at South College Street level.
- The **Floor 3 parking garage elevator bank** (*below, right*) opens into the Overstreet Mall, right across the Mall hallway from **McDonald's**.



Candidates must NEVER attempt to access the NCCTO through use of the building stairwells! Entry doors to the floors are kept locked to foot traffic at all times except during emergencies!